

**O. P. JINDAL SCHOOL, SAVITRI NAGAR**

**Annual Examination (2022 – 2023)**

**Class / Section: V**

**MM:80**

**Subject: Science**

**Time: 2 hr**

**Name \_\_\_\_\_**

**Roll No.: \_\_\_\_\_**

---

*(Fifteen Minutes Extra will be given for reading the Question Paper.)*

**General Instructions:**

- The question paper comprises of five sections A, B, C, D, E. There are 24 questions in the question paper. All questions are compulsory.
  - Section A, question no. 1 is of MCQ type carrying 1 mark each.
  - Section B, question no. 2 and 3 are of case based type questions.
  - Section C, question no. 4 to 12 are very short answer type questions carrying 2 marks each.
  - Section D, question no. 13 to 21 are short answer type questions carrying 3 marks each.
  - Section E, question no. 22 to 24 are long answer type questions carrying 5 marks each.
- 

**Section – A**

**Q1. Choose the correct option.**

- (i) Water may be contaminated with the germs of:  
(a) Typhoid      (b) Rabies      (c) Malaria      (d) Heart disease
- (ii) Using mosquito net prevents:  
(a) Rabies      (b) Malaria      (c) Skin disease      (d) Heart disease
- (iii) Cereal plants produce light pollen that is carried by  
(a) Water      (b) Birds      (c) Wind      (d) Snails
- (iv) The ovary turns into \_\_\_\_\_, and the ovules form the seeds.  
(a) Stem      (b) Fruit      (c) Leaves      (d) Root
- (v) The modified \_\_\_\_\_ of dahlia are used to produce new plants.  
(a) Root      (b) Stem      (c) Leaf      (d) Flower
- (vi) Rose plants are grown from:  
(a) Buds      (b) Seeds      (c) Leaf      (d) Stem cutting
- (vii) \_\_\_\_\_ keep the number of herbivores in check.  
(a) Carnivores      (b) Producers      (c) Omnivores      (d) Birds

Q3. A communicable disease is one that is spread from one person to another through a variety of ways that include: contact, breathing in an airborne virus; or by an insect. Non communicable diseases are caused due to lack of nutrients. Some examples of communicable disease include Covid19, hepatitis A, B and C, measles, and malaria. Most common forms of spread include food, insect bites, droplets, or skin contact.

- (i) Plants take carbon dioxide from the \_\_\_\_\_.  
 (a) Air (b) Soil (c) Food (d) Minerals
- (ii) Plants and animals use food for \_\_\_\_\_.  
 (a) Energy (b) Growth (c) Both a and b (d) None of these
- (iii) All the matter in the bodies of plants and animals come from:  
 (a) Soil (b) Air (c) Water (d) All of these
- (iv) \_\_\_\_\_ breakdown the bodies of plants and animals.  
 (a) Carnivores (b) Decomposers (c) Herbivores (d) Omnivores

Q2. Plants take carbon dioxide from the air, and the water and minerals from the soil. They use all these to make food, which animals eat. Plants and animals use food for energy and growth. A part of the food is also stored in their bodies. So, all the matter in the bodies of plants and animals come from the soil, air and water. When decomposers break down the bodies of plants and animals, they return matter to the soil and air. This helps to keep environmental balance.

Read the following passage and choose the correct option.

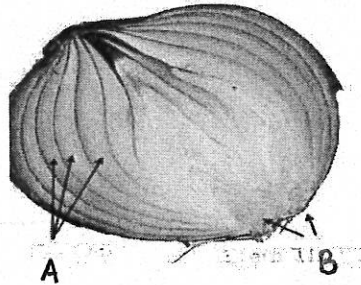
**Section-B**

- (viii) Lack of rainfall is called:  
 (a) Flood (b) Agriculture (c) Drought (d) Afforestation
- (ix) Plants change light energy into:  
 (a) Heat (b) Shadow (c) Electricity (d) Food
- (x) In a thermal power station, heat energy changes into:  
 (a) Food (b) Coal (c) Electricity (d) Light
- (xi) The winding ridge of a screw is:  
 (a) Thread (b) Nail (c) Fulcrum (d) Load
- (xii) The tip of a needle is a:  
 (a) Lever (b) Effort (c) Load (d) Wedge

- (i) The disease that spread from one person to another is called  
 (a) Communicable (b) Non communicable (c) Healthy (d) Unhealthy
- (ii) Which of the following is a communicable disease?  
 (a) Goitre (b) Diabetes (c) Heart disease (d) Malaria
- (iii) A communicable disease spread through  
 (a) Insects (b) Contact (c) Airborne viruses (d) All of these
- (iv) Non communicable diseases are caused due to  
 (a) Lack of nutrients (b) Insect bite (c) Contact (d) Air

### Section - C

- Q4. Mention any two things that we can do to prevent diseases that spread through food and water?
- Q5. Why are flowers colourful and / or fragrant?
- Q6. What are pollinators? Give two examples of it.
- Q7. Label the following picture.



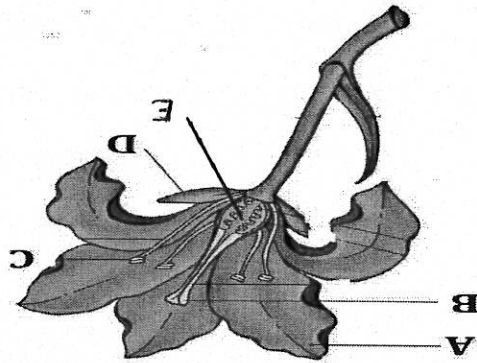
- Q8. What are storage roots? Give one example of it.
- Q9. Write two ways in which animals help plants?
- Q10. What are two things that must happen for work to be done?
- Q11. What are renewable sources of energy? Name any two.
- Q12. In what way does a pulley make our work easier?

### Section- D

- Q13. What is biomass? Name two ways by which we use it to get energy.
- Q14. Name three fuels. Why are they called non-renewable sources of energy?

\*\*\*\*\*

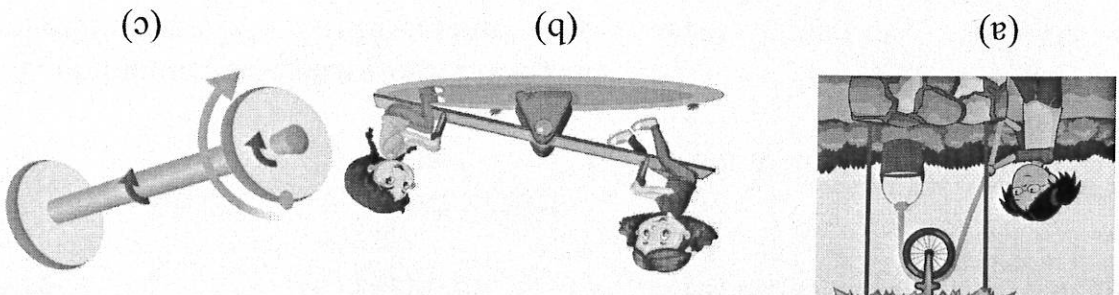
- Q24. Draw and label any two types of lever.
- Q23. What is stem cutting? Which parts of the following plants produce new plants?  
 (i) Hibiscus (ii) Bryophyllum (iii) Potato (iv) Cactus



Q22. Label the following parts of the flower.

**Section-E**

- Q21. In what ways can food get contaminated? (Mention any three)
- Q20. Mention any three causes of water pollution.
- Q19. Why do seeds need to be dispersed? Describe two ways in which animals help in seed dispersal.
- Q18. What is vegetative reproduction? Which parts of a plant may be involved in it?
- Q17. Name one human activity that is causing global warming. What are the effects of global warming?
- Q16. What is food chain? Draw any one food chain.



Q15. Identify the type of simple machines in the following: